

E-Learning KR C5 Overview

KUKA

Table of contents

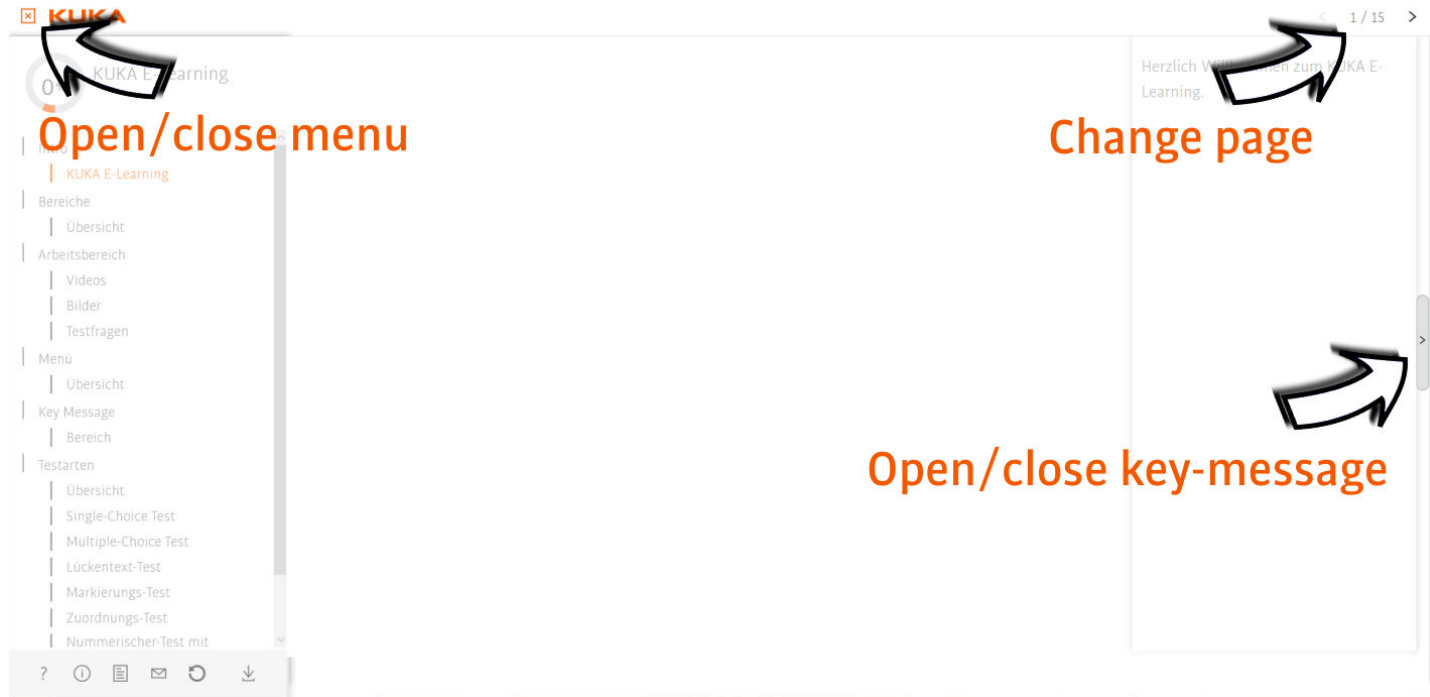
1. Intro	
› Welcome.....	4
› E-Learning Description.....	5
2. Overview	
› Foreword.....	6
3. The new controller	
› In what sizes is the KR C5 available?.....	7
› Why is a new controller generation necessary?.....	8
› What advantages does the new KR C5 controller generation bring us?.....	9
› Compact design due to highly integrated assemblies.....	10
› Question.....	11
› Which controller is required for which robot?.....	12
› Introducing the new KR C5 micro controller.....	13
› KR C4 compact and KR C5 micro in comparison.....	14
› The universal mounting holder for the KR C5 micro.....	15
› How can the KR C5 micro be installed?.....	16
› Question.....	17
› KR C5 controller variants for low, medium, high and heavy payloads.....	18
› The clever KR C5 cabinet concept.....	19

- › Comparison of the KR C4 and KR C5 cabinet concepts. 20
- › What delivery variants are planned? 21
- › The controller variants in comparison. 22
- › Advantages of the new KR C5 multi-robot cabinet system. 23
- › Question. 24
- › Reduction of floor space requirements due to stackable cabinets. 25
- › Reduction of floor space requirements due to multi-robot cabinets. 26
- › Which KR C5 variant replaces which KR C4 variant? 27
- › Question. 28
- › Will customers have to re-adjust when planning a new project? 29
- 4. Closing remarks. 30

1. Welcome



2. E-Learning Description



The screenshot shows the KUKA E-Learning interface. On the left, there is a navigation menu with categories like 'Bereiche', 'Arbeitsbereich', 'Menü', 'Key Message', and 'Testarten'. The main content area on the right displays a slide titled 'Herzlich Willkommen zum KUKA E-Learning.' with a page indicator '1 / 15' at the top right. Three annotations with arrows point to specific UI elements: 'Open/close menu' points to the hamburger menu icon, 'Change page' points to the page navigation arrows, and 'Open/close key-message' points to a small arrow icon on the right side of the slide.

Open/close menu

Change page

Open/close key-message

3. Foreword



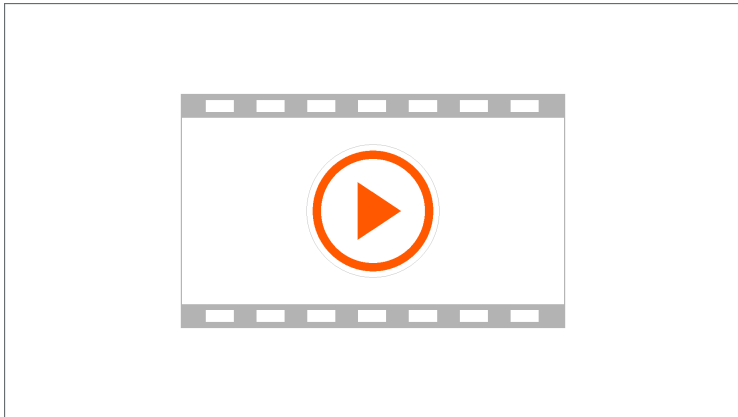
4. In what sizes is the KR C5 available?



5. Why is a new controller generation necessary?



6. What advantages does the new KR C5 controller generation bring us?



7. Compact design due to highly integrated assemblies



8. Question

Which KR C5 variants are available?

- KR C5 macro
- KR C5 micro
- KR C5 XL
- KR C5 L
- KR C5 S
- KR C5 M
- KR C5 XS



9. Which controller is required for which robot?



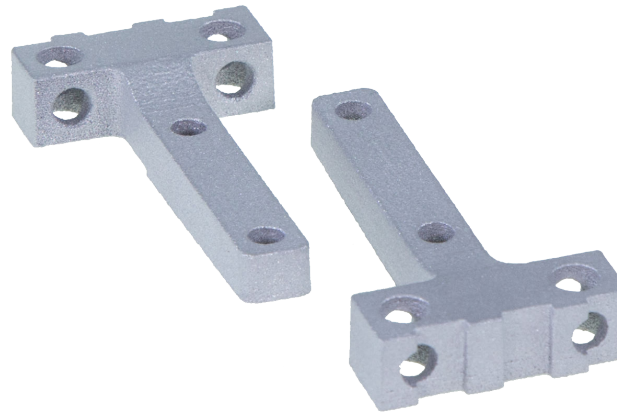
10. Introducing the new KR C5 micro controller



11. KR C4 compact and KR C5 micro in comparison



12. The universal mounting holder for the KR C5 micro



13. How can the KR C5 micro be installed?



14. Question

Match the depicted images to the corresponding installation variants.



Mounting frame for 19-inch slide-in modules

Vertical installation on wall

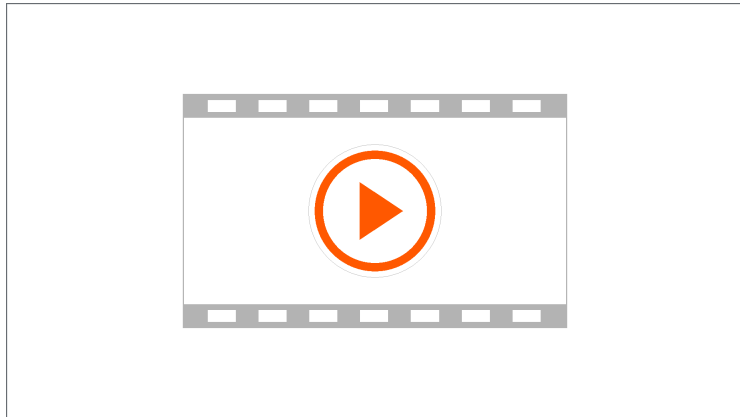
Flat installation on wall

Single robot controller standing on side

Stacked installation of robot controllers

Standalone installation of robot controller

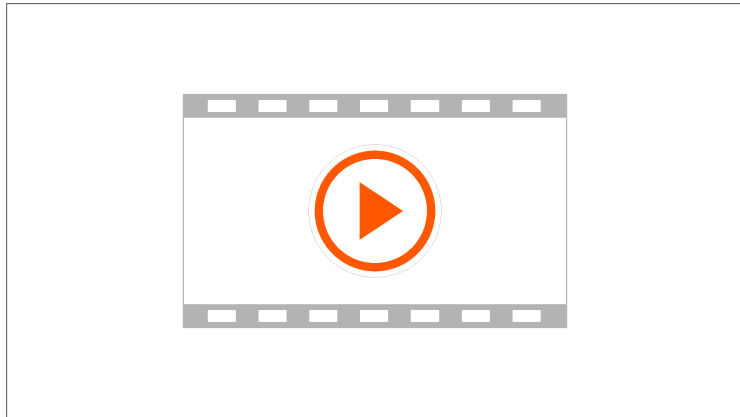
15. KR C5 controller variants for low, medium, high and heavy payloads



16. The clever KR C5 cabinet concept



17. Comparison of the KR C4 and KR C5 cabinet concepts



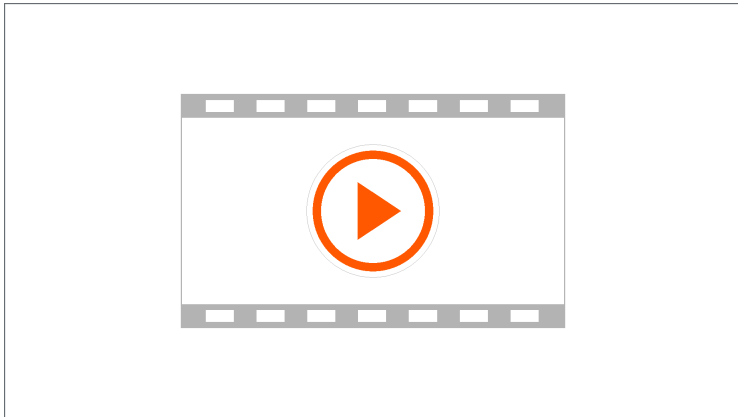
18. What delivery variants are planned?



19. The controller variants in comparison



20. Advantages of the new KR C5 multi-robot cabinet system



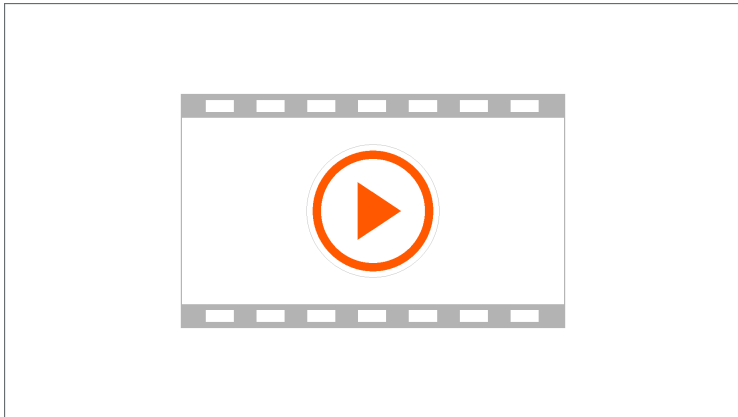
21. Question

What can be installed in a KR C5 triplecab cabinet?

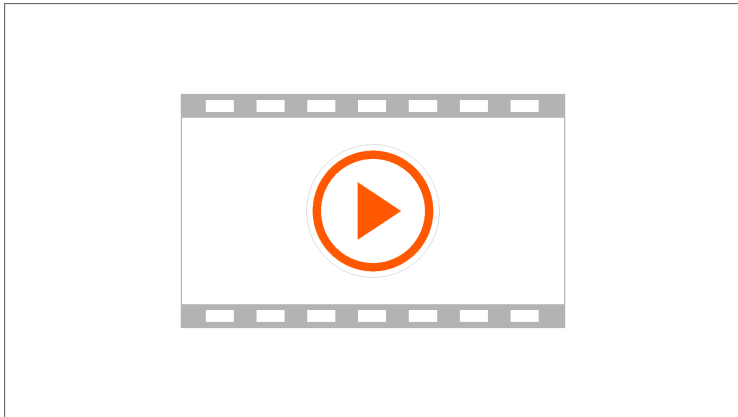
- 3 robot controllers
- 1 robot controller and 2 external axis controllers
- 1 robot controller, 1 external axes controller and peripheral equipment
- Not more than 1 robot controller



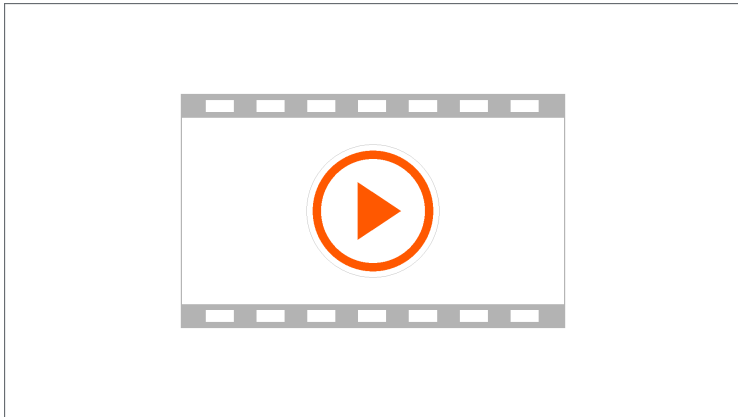
22. Reduction of floor space requirements due to stackable cabinets



23. Reduction of floor space requirements due to multi-robot cabinets



24. Which KR C5 variant replaces which KR C4 variant?



25. Question

A KR C4 smallsize-2 is to be changed over to the KR C5 for operation with a KR Cybertech. Which KR C5 variants can be used?

- KR C5 micro
- KR C5 S
- KR C5 M
- KR C5 L



26. Will customers have to re-adjust when planning a new project?



27. Closing remarks

